

A decorative vertical bar on the left side of the slide, composed of various geometric shapes (squares, circles, and semi-circles) in shades of blue, green, yellow, and brown, arranged in a pattern that resembles a stylized forest or a mosaic.

Forest Foundation Philippines: Sustainable Forest Landscape Approach

Eric D. Buduan
Senior Program Officer

Land Cover of the Philippines



Forest
Foundation
Philippines

Let's grow together.

Forest Foundation Philippines

A **grant-making organization** that provides financial and technical support to organizations and individuals that empower the people to protect the forests



Strategy

Sustainable forest landscape approach

1. Sierra Madre
2. Palawan
3. Samar and Leyte
4. Bukidnon and Misamis Oriental

Prepared by the Environmental Science for Social Partnership with the Philippine Tropical Forest and Land Use (PTFLU) analyzing the extent of Philippine upland forest cover for the period 1999-2002, and in consultation with Philippine society which can lay the appropriate action based on this presentation of the Philippine uplands and the uses and applications of the map.

The map has been produced to:

- show the extent of forest cover for the period 1999-2002, and in consultation with Philippine society which can lay the appropriate action based on this presentation of the Philippine uplands and the uses and applications of the map.
- show the extent of forest cover for the period 1999-2002, and in consultation with Philippine society which can lay the appropriate action based on this presentation of the Philippine uplands and the uses and applications of the map.

Forest cover is defined as areas that are above 100 meters above sea level and have a slope of 18% or more. Forest cover were delineated using satellite imagery.

The map follows the framework developed by Anderson et al. (1999) for the forest formations types following the Swedish SPOT Philippine Forest categories (1988) and the FAO's National Forest and Tree Resource Inventory (2005) classes.

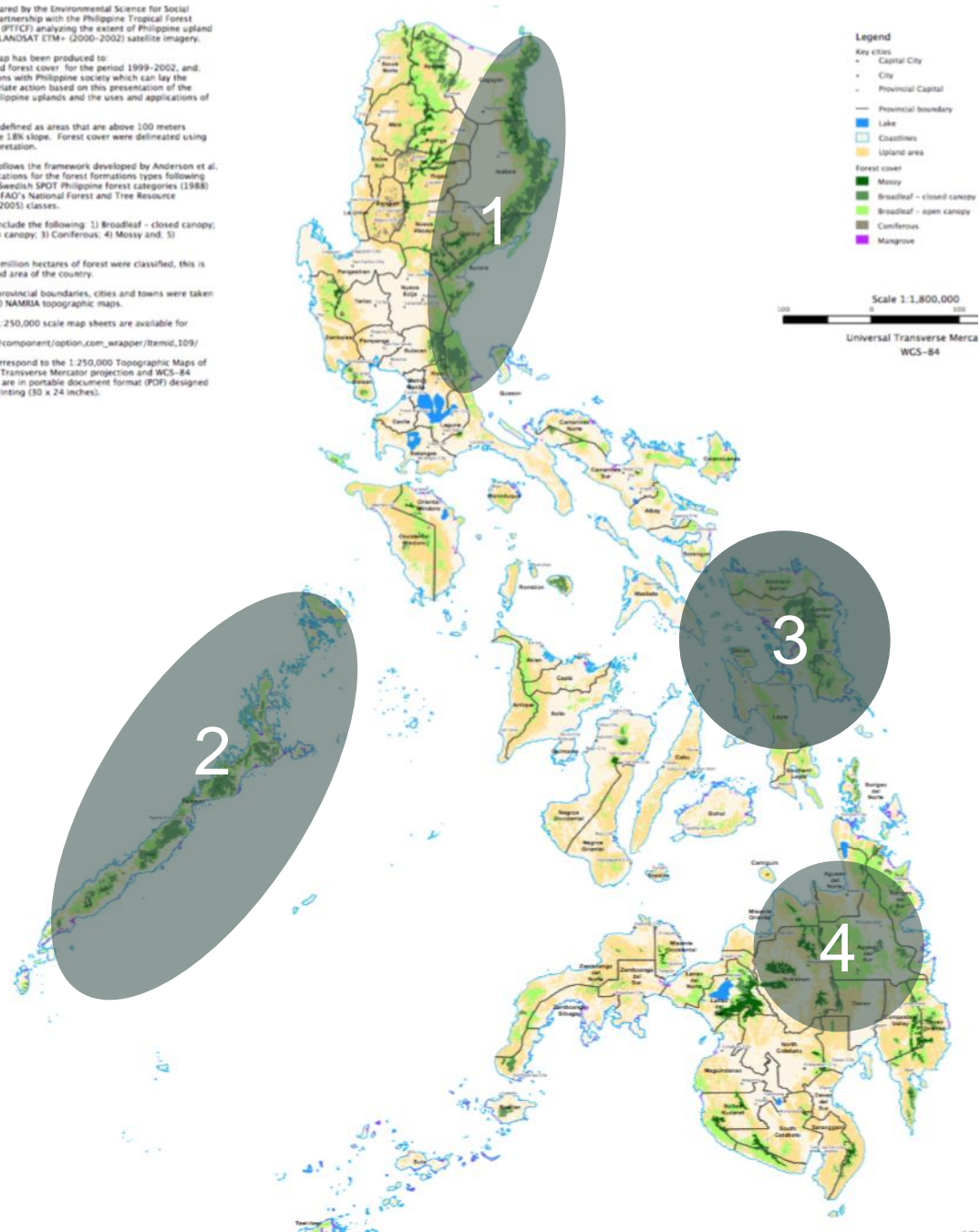
The map includes the following:

- 1) Broadleaf - closed canopy
- 2) Broadleaf - open canopy
- 3) Coniferous
- 4) Mossy and
- 5) Mangrove

4 million hectares of forest were classified, this is about 10% of the country's land area.

The map shows provincial boundaries, cities and towns were taken from the 1:250,000 scale map sheets are available for the Philippines.

The map corresponds to the 1:250,000 Topographic Maps of the Philippines in Transverse Mercator projection and WGS-84 datum. The map is in portable document format (PDF) designed for printing (30 x 24 inches).



Forest
Foundation
Philippines

Let's grow together.

Results Framework, 2017-2021



**1. GROW
FORESTS**



**2. GROW
LIVELIHOODS**



**3. GROW
PARTNERSHIPS**



**4. GROW
ADVOCATES**



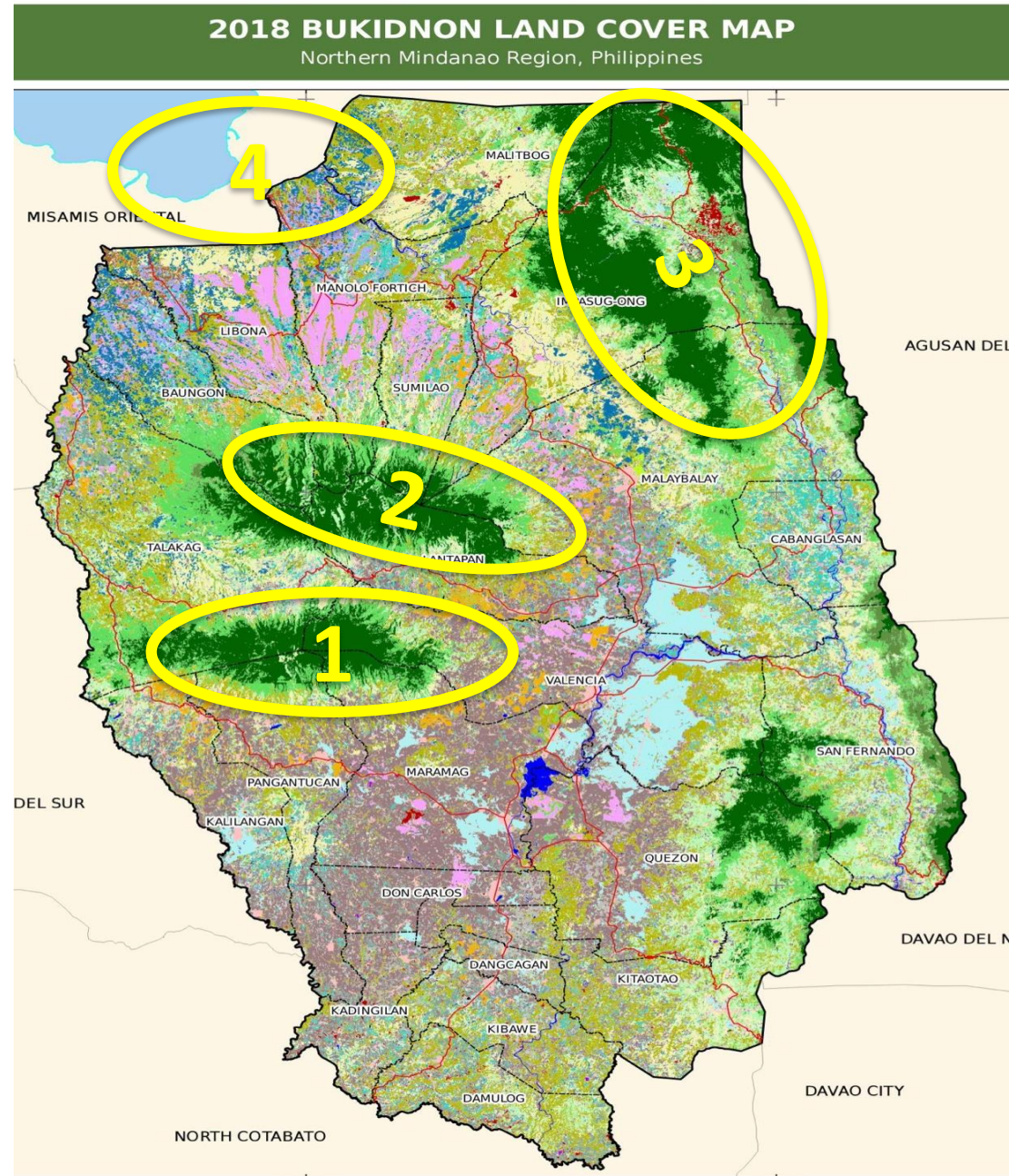
**Forest
Foundation
Philippines**

Let's grow together.

Bukidnon-Misamis Landscape

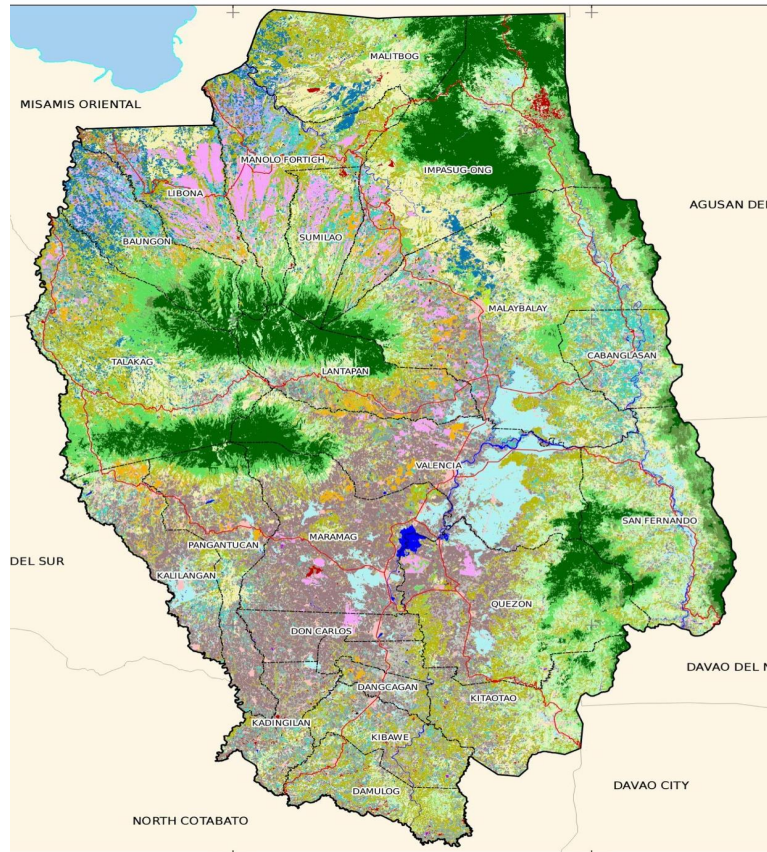
Project Locations:

1. Mt. Kalatungan Range Natural Park
2. Mt. Kitanglad Range Natural Park
3. Pantaron Range
4. Macajalar Bay



2018 BUKIDNON LAND COVER MAP

Northern Mindanao Region, Philippines



Bukidnon-Misamis Landscape

Grow Forests:

- Scientifically-sound forest ecosystem assessments (*land cover/vegetation mapping, biodiversity studies*)
- Participatory planning, zoning and delineation of forests (*ADSDPP, FLUP, harmonization of plans*)



Forest
Foundation
Philippines

Let's grow together.

Bukidnon-Misamis Landscape

Grow Forests:

- Participatory, threat-based, multi-sectoral forest protection (*LAWIN, WEOs, forest fire management*)
- Science-based and participatory reforestation, restoration & enhancement of forests (*nurseries*)





Bukidnon-Misamis Landscape

Grow Livelihoods:

- Participatory action research, analysis and development of sustainable livelihood (*agroforestry, coffee, rattan, bamboo, fuelwood production, nursery business operation*)
- Options for sustainable financing mechanisms (*REDD+ readiness*)



Bukidnon-Misamis Landscape

Grow Partnerships:

- Baseline data on organizations, institutions, policies and relevant development plans
- Needs-based, area-appropriate capacity-building program
- Community-based organizations strengthening
- Appropriate forest management bodies and frameworks support



Bukidnon-Misamis Landscape

Grow Advocates:

- Knowledge management
- Communications
- Advocacy
- Research
- Scholarships
- Constituency-building



Lessons and Experiences in FLR:

- Assessment, characterization
- Integration, collaboration, partnerships
- Science-based actions, IKSP
- Community-based approach
- Land-use zoning (*protection/production*)
- Strengthening livelihoods/community benefits




Forest
Foundation
Philippines

Let's grow together.

THANK YOU.

Contact us:

 2F Valderrama Bldg., 107 Esteban St., Legaspi Village, Makati City, Metro Manila, Philippines 1229

 (+63 2) 891-0595, (+63 2) 864-0287

 info@forestfoundation.ph

 www.forestfoundation.ph

Follow us:

 facebook.com/forestfoundationph