



ENHANCING RESOURCE GOVERNANCE IN MT. KALATUNGAN RANGE NATURAL PARK TOWARDS SUSTAINABLE INCLUSIVE DEVELOPMENT

Xavier Science Foundation Inc.



Mt. Kalatungan

- Key Biodiversity Area
- Fifth highest mountain in the Philippines
- Major water source of CDO, Bukidnon and North Cotabato



HOME to IP TRIBES

Indigenous Peoples

There are Indigenous Peoples tribes all over the different sides of Mt. Kalatungan. They are the TALAANDIGS, MANOBOS and BUKIDNONS. Environmental protection is a large part of their culture, as they count their forests as sacred grounds.



XSF IS IN THE AREA

Xavier Science Foundation Inc. is in the area doing reforestation, organizational development and livelihood support among others, with its partner IPOs.

Its projects on environment include the ff:

PAYMENT FOR ECOSYSTEM SERVICES

ECOCARES PROJECT

ECOSEED PROJECT

GLOBAL LAND TOOL NETWORK

XSF's learning

in working with 7 IPOs in Mt. Kalatungan:

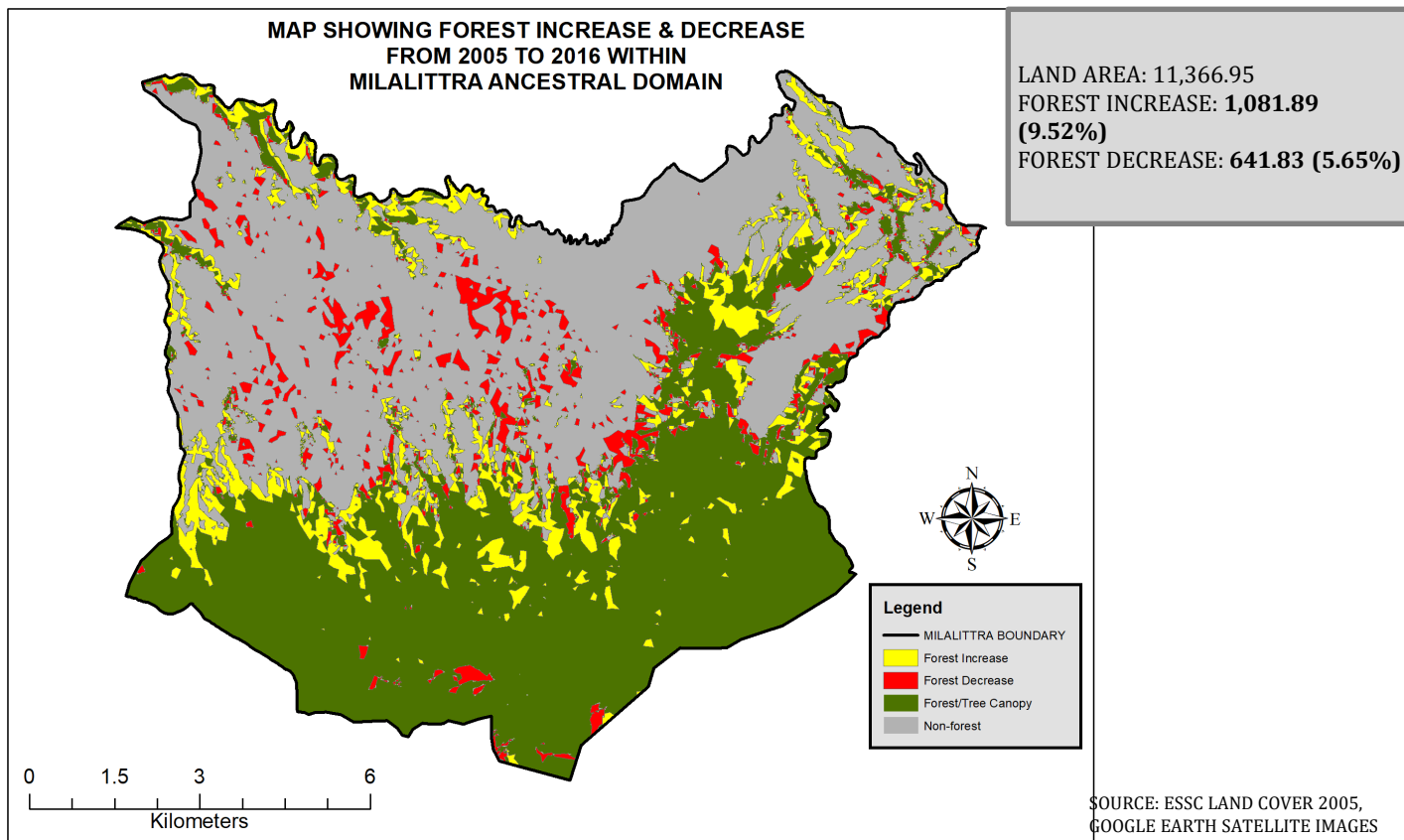
In IP areas,

forests are better conserved

1. MILALITTRA (Talakag)
2. PTTA (Pangantucan)
3. NAMAMAYUK (Pangantucan)
4. CALUDA (Maramag)
5. TUMINDOK (Valencia)
6. MANTALA (Valencia)
7. BLLUPENTTRAS (Valencia)

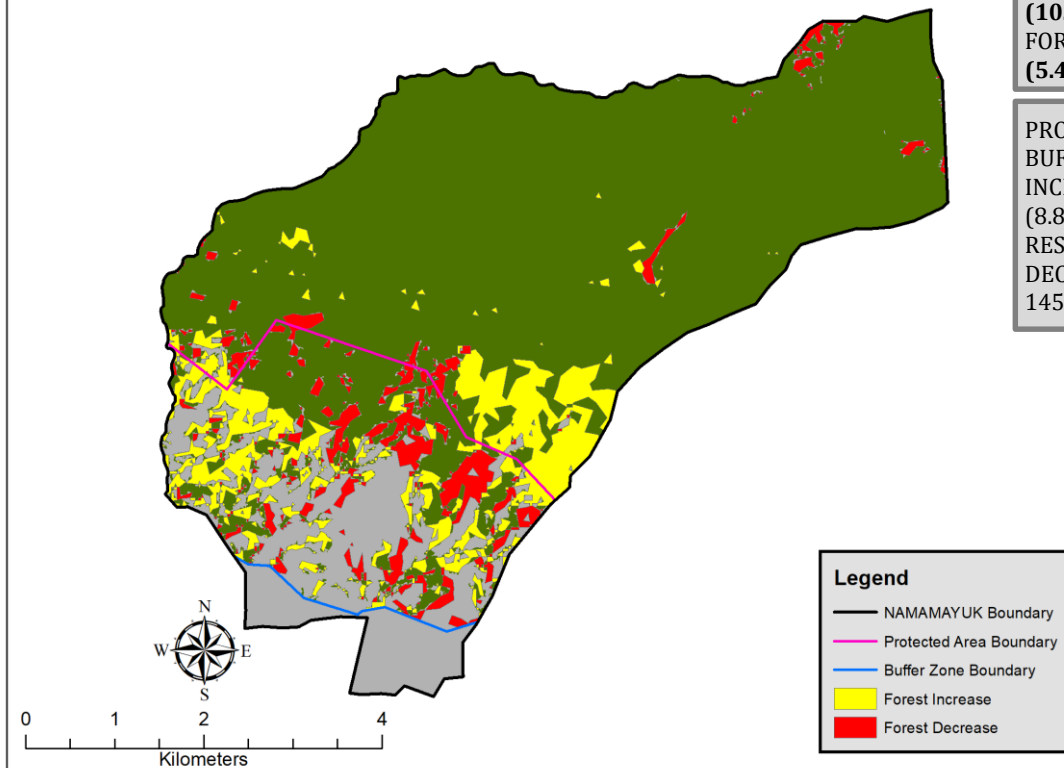


MILALITTRA



NAMAMAYUK


MAP SHOWING FOREST INCREASE & DECREASE
FROM 2005 TO 2016 WITHIN PROTECTED AREA



LAND AREA: 3,505.51
FOREST INCREASE: 355.40
(10.14%)
FOREST DECREASE: 190.76
(5.44%)

PROTECTED AREA: 2,407.43 HAS
BUFFER ZONE: 955.59HAS
INCREASE IN PA & BZ: 212.94 HAS
(8.85%) & 300.10 HAS (30.37%)
RESPECTIVELY
DECREASE: 54.75 HAS (2.27%) &
1454.28 (16.114%) RESPECTIVELY

SOURCE: NAMAMAYUK ADSPDDP, ESSC 2005
LANDCOVER, & GOOGLE EARTH SATELLITE
IMAGES 2016

A group of approximately ten people are gathered in a lush, green forest. Some individuals are standing in the background, while others are kneeling or sitting on the forest floor in the foreground. They are dressed in casual outdoor clothing, including jackets, hats, and hoodies. Several people are wearing white identification badges around their necks. The background is filled with dense trees and foliage, creating a natural, outdoor setting.

» “Some studies show that levels of protection are actually higher under community or indigenous management than under government management alone (Global Biodiversity Outlook 3, 2010).

» This is significant as globally, four to eight million square kilometers are owned or administered by communities.

CHALLENGES



Expanding commercial pressures

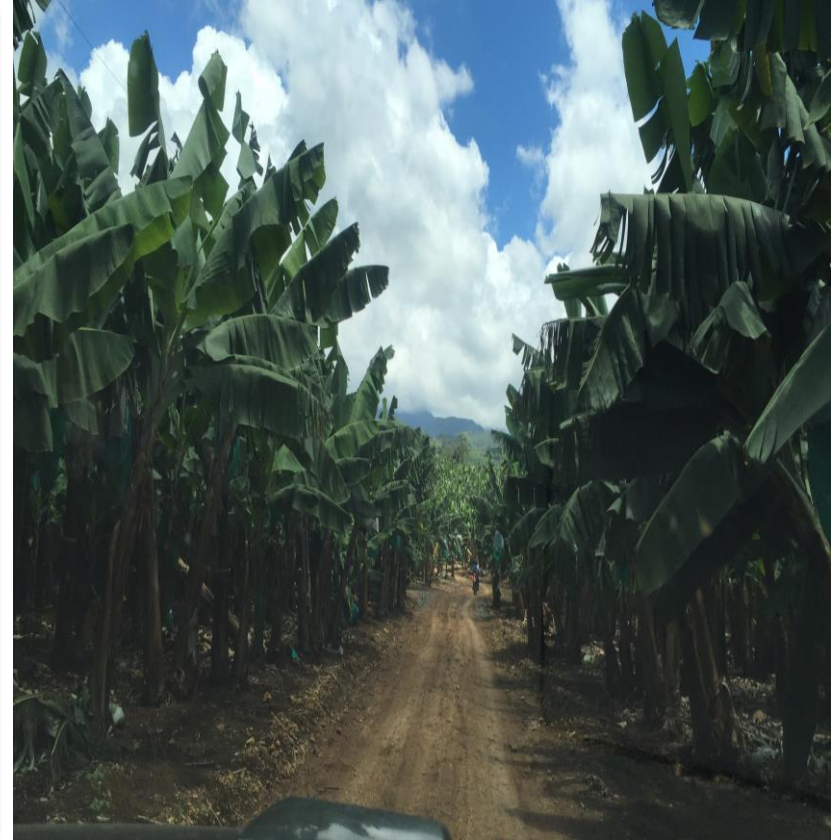


Resource degradation



Poverty and Food Insecurity

Expanding Commercial Production



Resource Degredation



Poverty and Food Insecurity

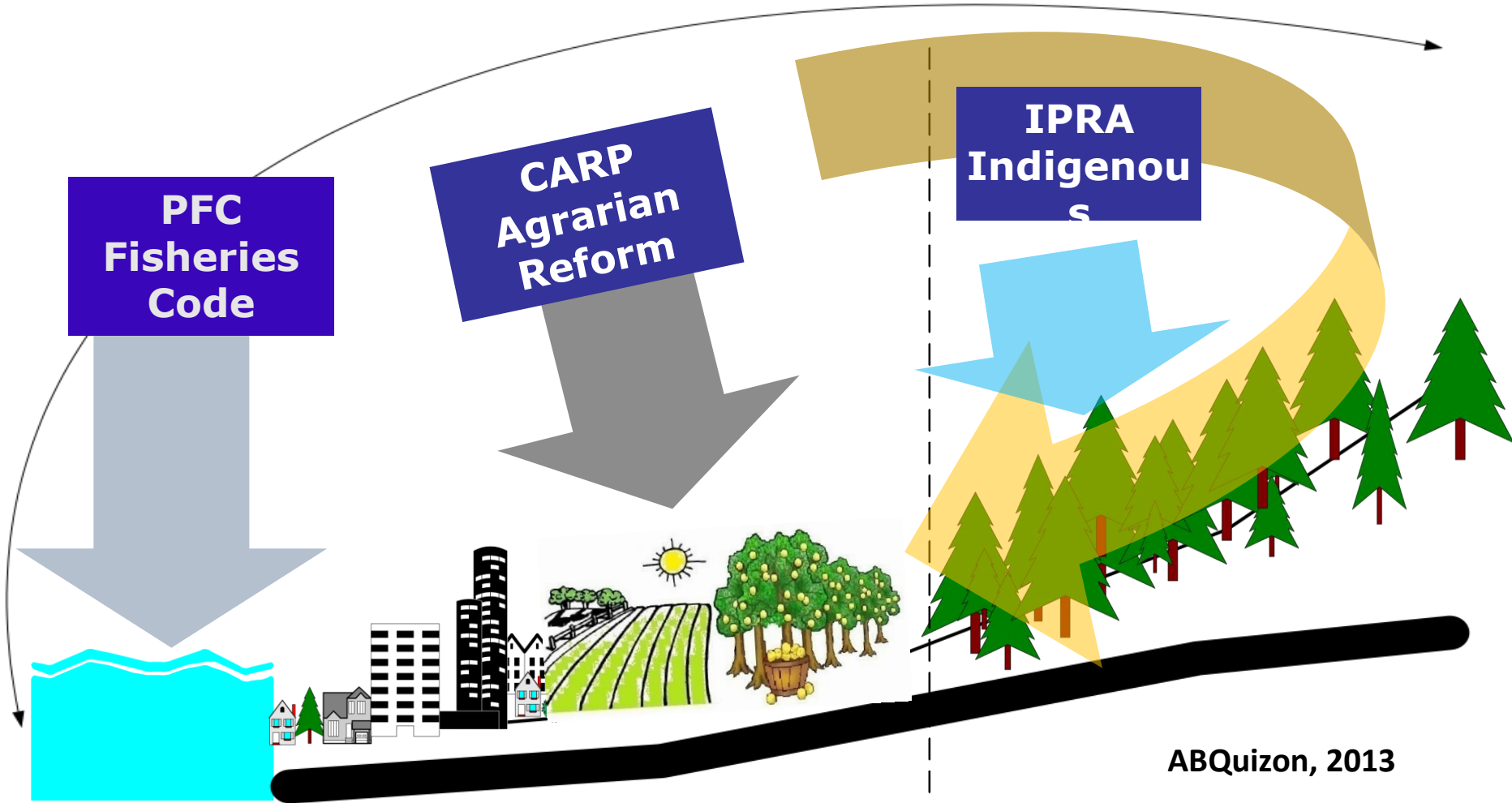


A man wearing a red baseball cap with a logo and a red long-sleeved shirt is working in a field. He is holding a bundle of green plants. In the background, there are rolling green hills and mountains under a cloudy sky. The scene is outdoors, likely in a rural or agricultural setting.

MOVING FORWARD

- Enhancing tenurial security of indigenous and local communities
 - Empowering IPOs especially women and youth
 - Forging stronger collaboration among partners and stakeholders
 - Advocating cultural traditions and practices with government agencies
- Landscape governance may yield better results.**

Sectoral Approach on Resource Reforms in Philippines



DAGHANG SALAMAT

Mt. Kalatungan photos from Google and Xavier University Devcom Students
www.xsfoundationinc.org