

FOREST & LANDSCAPE RESTORATION (FLR): THE REDD+ EXPERIENCE

International Conference on Forest and Landscape Restoration

New World Hotel, Makati City
27 February 2019

Presented by:

FOR. FLORANTE T. SABEJON

Assistant Professor, Biliran Province State University (BiPSU)
Former Senior Coordinator, German International
Cooperation (GIZ)



OUTLINE OF PRESENTATION

- 1. REDD+ Context**
- 2. The Project Sites: Phase I and Phase II**
- 3. Project Approach**
- 4. Major interventions which contributed to FLR**
 - a. Formulated the Forest Land Use Plan (FLUP)
 - b. Implemented the Reforestation, ANR, Agroforestry
 - c. Deputized Bantay-Gubat
 - d. Created the Multi-stakeholder Forest Protection Committee (MFPC)
 - e. Established a functional City/Municipal ENROs
- 5. Financing Agreements and local subsidy contracts**
- 6. Lessons Learned**
- 7. Recommendations**

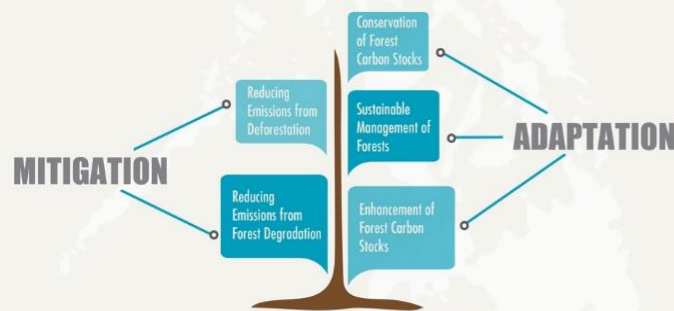
REDD+

REDD+ is an effort to create a financial value for the carbon stored in forests, offering incentives for developing countries to reduce emissions from forested lands and invest in low-carbon paths to sustainable development. "REDD+" goes beyond deforestation and forest degradation, and includes the role of conservation, sustainable management of forests and enhancement of forest carbon stocks. (Source: UN-REDD)

REDD+ SITES IN THE PHILIPPINES



5 ELIGIBLE ACTIVITIES



EVOLUTION OF REDD+



Reducing Emissions from Deforestation and Forest Degradation and the

Role of Conservation, Sustainable Management of the Forests, and Enhancement of Forest Carbon Stocks in developing countries.



FORESTS ARE IMPORTANT

850 Million Ha

Global Forest Cover

Degraded Forest worldwide for C-sequestration of 117 Gt CO₂ by 2030

5% of atmospheric CO₂

(Figures from: IPCC, 2007; FAO, 2006; UNFCCC 2009; ITTO, 2009)

6.84 Million Hectares

APPROXIMATELY

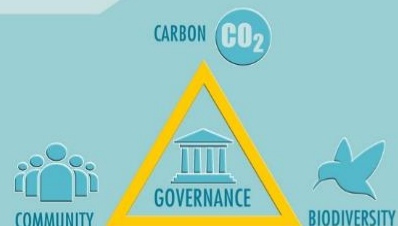
Total Philippine Forest Cover (Published by NAMRIA, 2010)



PALAWAN ISLANDS

CURRENCY OF REDD+

REDD+ provides VALUE to forests.



Socio-Economic Benefits/Livelihood Improvement



Biodiversity Conservation



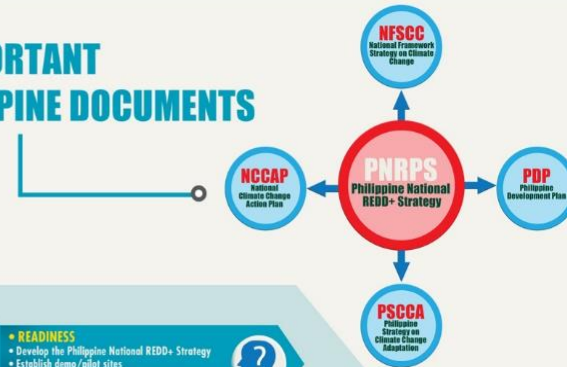
Ecosystem Services

CO-BENEFITS

FOREST

Forging Ties...
Revitalising efforts...
Steering actions

5 IMPORTANT PHILIPPINE DOCUMENTS



PHASE 1

- **READINESS**
- Develop the Philippine National REDD+ Strategy
- Establish demo/pilot sites
- Design key elements (NS/AP, NFMS, S/SIS, FREL/FRL)

PHASE 2

- **IMPLEMENTATION**
- Settle enabling conditions
- Establish additional Sites/Scaling Up
- Policies and Measures

PHASE 3

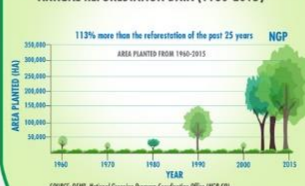
- **RESULTS-BASED PAYMENT**
- Performance-based actions
- Verified emission reductions and removals
- REDD+ financing engagement and interventions

3 PHASES OF REDD+

REDD+ PROGRESS IN THE PHILIPPINES



NATIONAL GREENING PROGRAM ANNUAL REFORESTATION DATA (1960-2015)



FOREST PROTECTION

LAWIN - (Landscape and Wildlife Indicators) Forest Biodiversity Protection System (LBPPS) is an approach in the management of protected areas and other natural areas.

FOREST ILLEGAL LOGGING HOTSPOTS
As of February 2016, the number of illegal logging hotspot in the country after the issuance of EO no. 23 was reduced from 197 to 13 municipalities or approximately 93.4%. *Palawan (Brooke's Point); Davao Oriental (Cateel, Boston, Baganga and Lupan); Davao del Norte (Tagum and Kapalong); Compostela Valley (Laak, Nabunturan and Monte Vista); Agusan del Sur (Trento, Loreto and San Luis)

Pursuant to Section 77 of PD 705, from year 2010-2015, Bicol region has the highest reported number of cases filed which summed up to 277 cases while the National Capital Region (NCR) only reported 12 cases. Source: Planning and Policy Studies Office, DENR Control Office



THE PROJECT SITES - PHASE I (PILOT SITE)

- Project duration 2009-2013

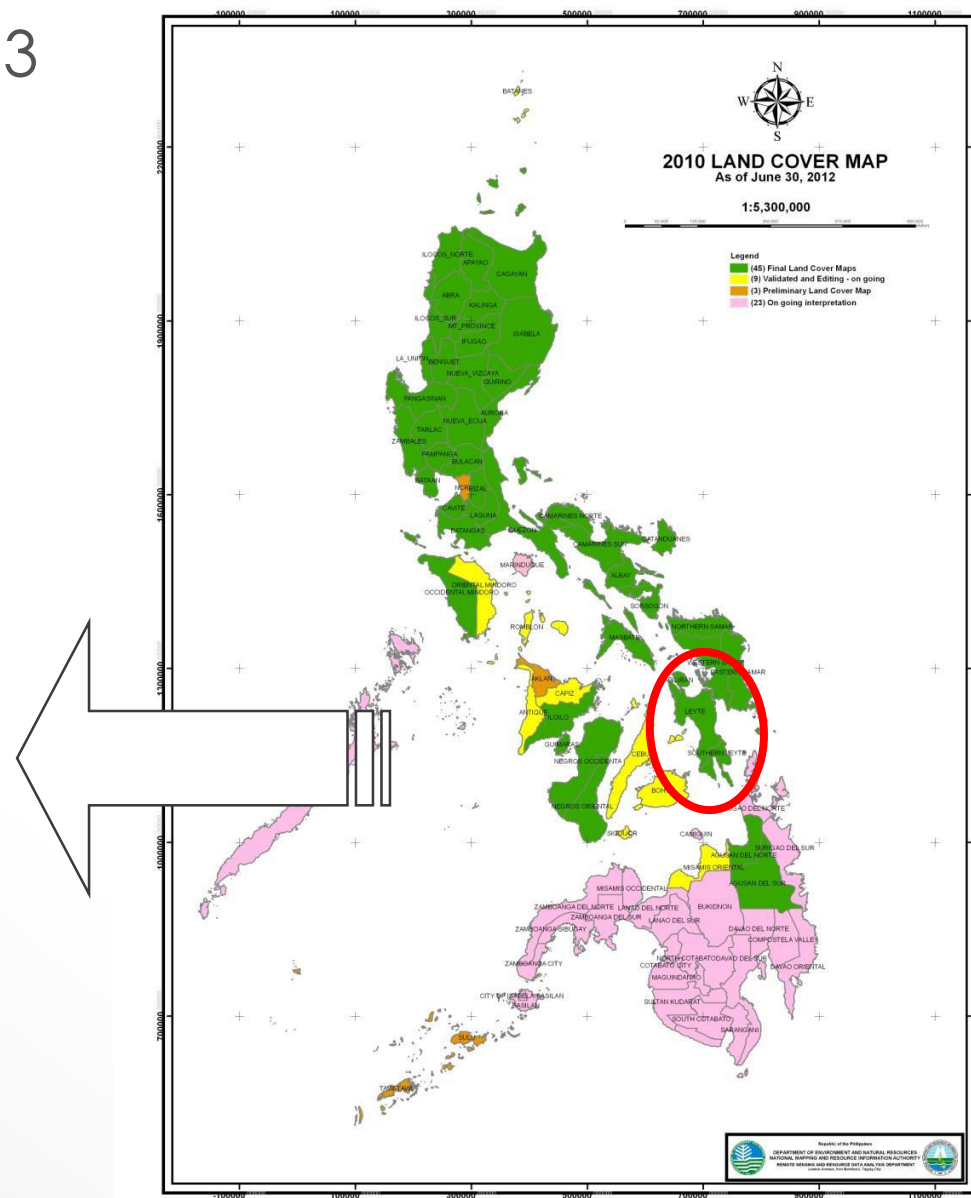
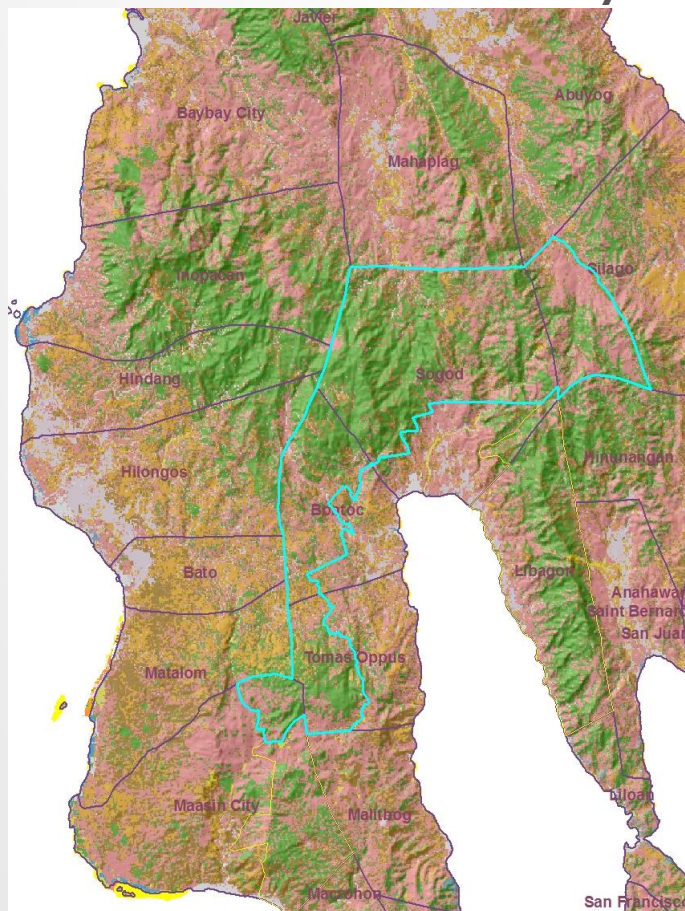
Partners:

LGU:

Silago
Sogod
Bontoc
Tomas Oppus
Maasin City

and 7 CBFM POs

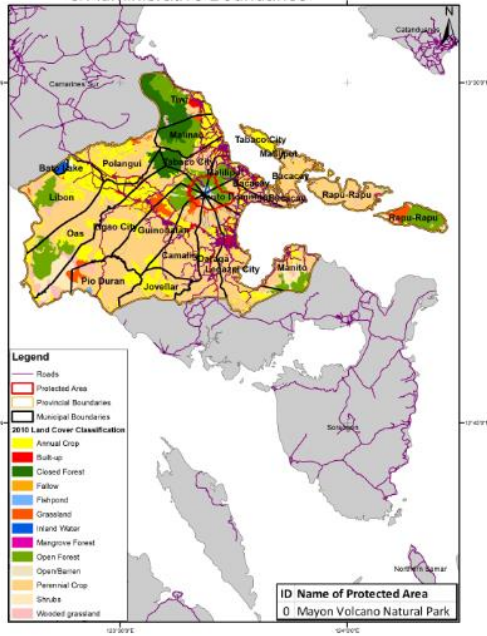
Province of Southern Leyte



THE PROJECT SITES - PHASE II (NATIONAL REDD+ SYSTEM)

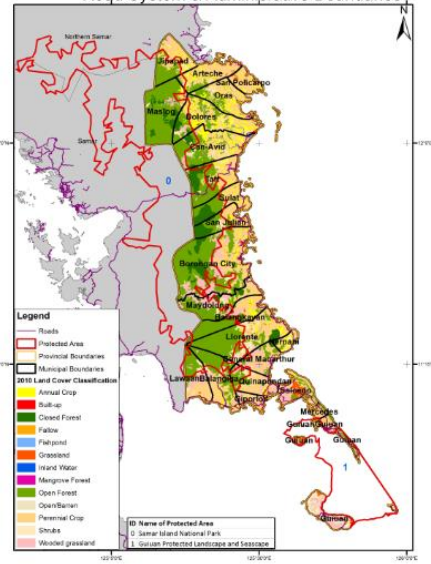
Luzon: Albay – Ligao City & Oas

Albay: Forest Cover, Protected Areas, Road System & Administrative Boundaries



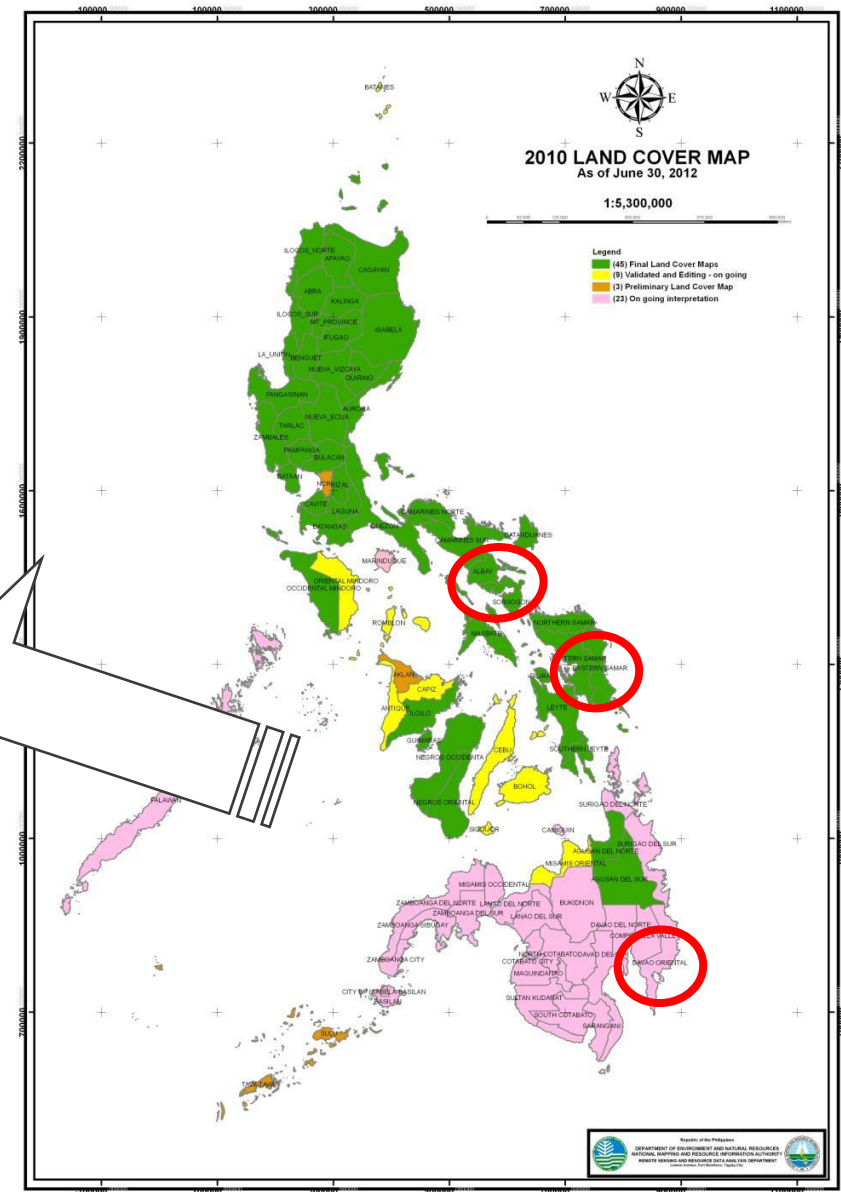
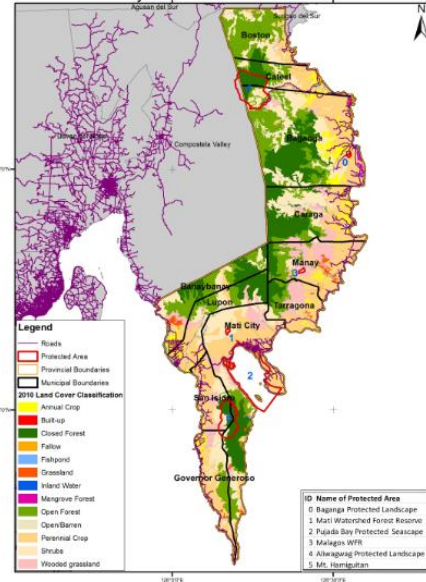
Visayas: Eastern Samar – Borongan City & Maydolong

Eastern Samar: Land Cover, Protected Areas, Road System & Administrative Boundaries



Mindanao: Davao Oriental – Caraga, Manay & Tarragona

Davao Oriental: Forest Cover, Protected Areas, Road System & Administrative Boundaries



- Project duration 2013-2017

- Support to Readiness Phase under the PNRPS
- Project implementation based on lessons learnt under existing REDD+ activities under the PNRPS
- Multi-stakeholder approach involving key actors
- Link of field level implementation with policy level
- Complementary approach with other REDD+ project activities
- Coordination arrangements led by DENR-FMB under the PNRPS working mechanisms (TWGs)
- Link to international discussions on REDD+



KEY RESULTS

**MAJOR INTERVENTIONS CONTRIBUTED TO
FOREST & LANDSCAPE RESTORATION (FLR)**

FOREST LAND USE PLAN (FLUP)

❑ Good practices in the process of formulating FLUP

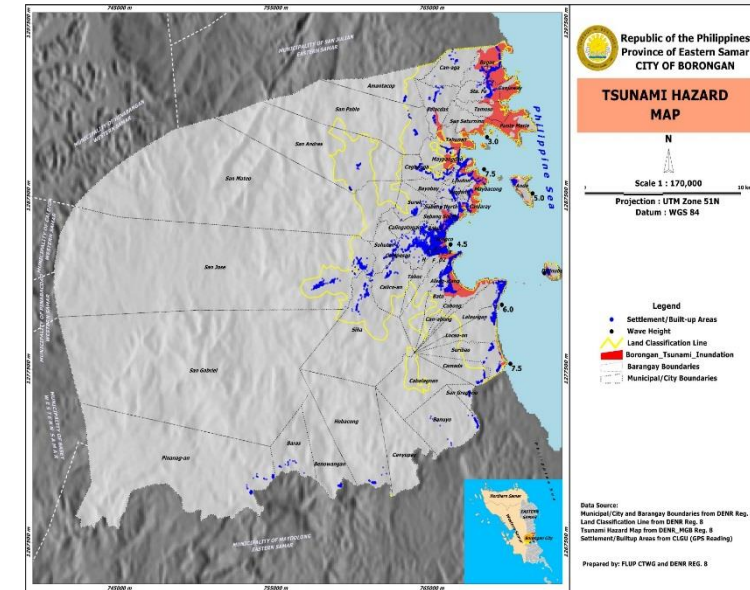
- ✓ Appropriate letter of intent (LOI) from the local chief executive (LCE) to DENR requesting assistance in formulating their FLUP. The LGU should express their demand and support needed through a formal LOI.
- ✓ The LCE issued executive order for the creation of the Municipal Technical Working Group (MTWG). The team was capacitated and involved in the FLUP processes and GIS-based mapping.
- ✓ Linked CLUP guidelines for the purpose of developing a comprehensive FLUP.
- ✓ FLUP Orientation was conducted for the Municipal Legislative body and for the Association of Barangay Council (ABC).



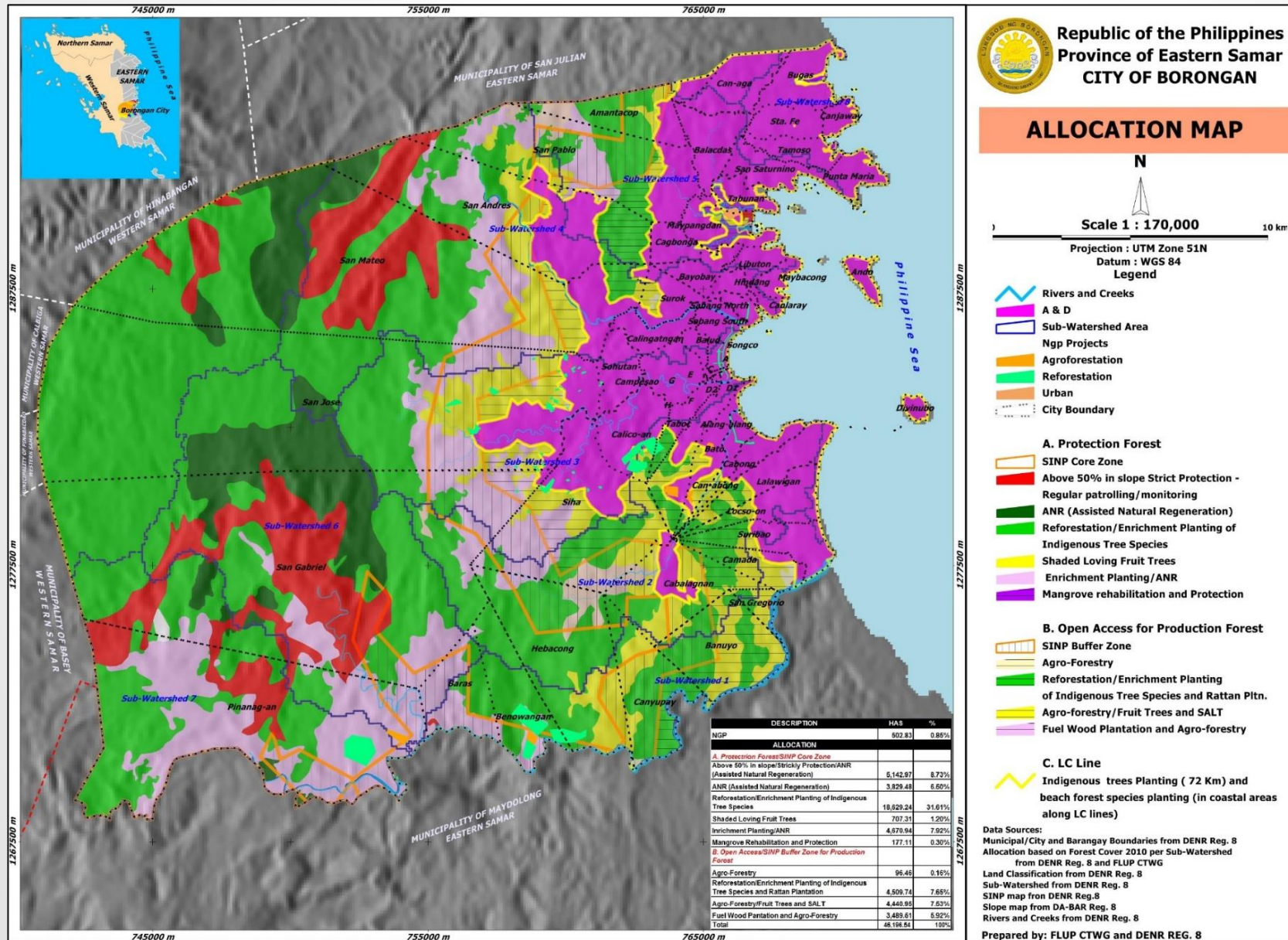
FOREST LAND USE PLAN (FLUP)

❑ Good practices in the process of formulating FLUP

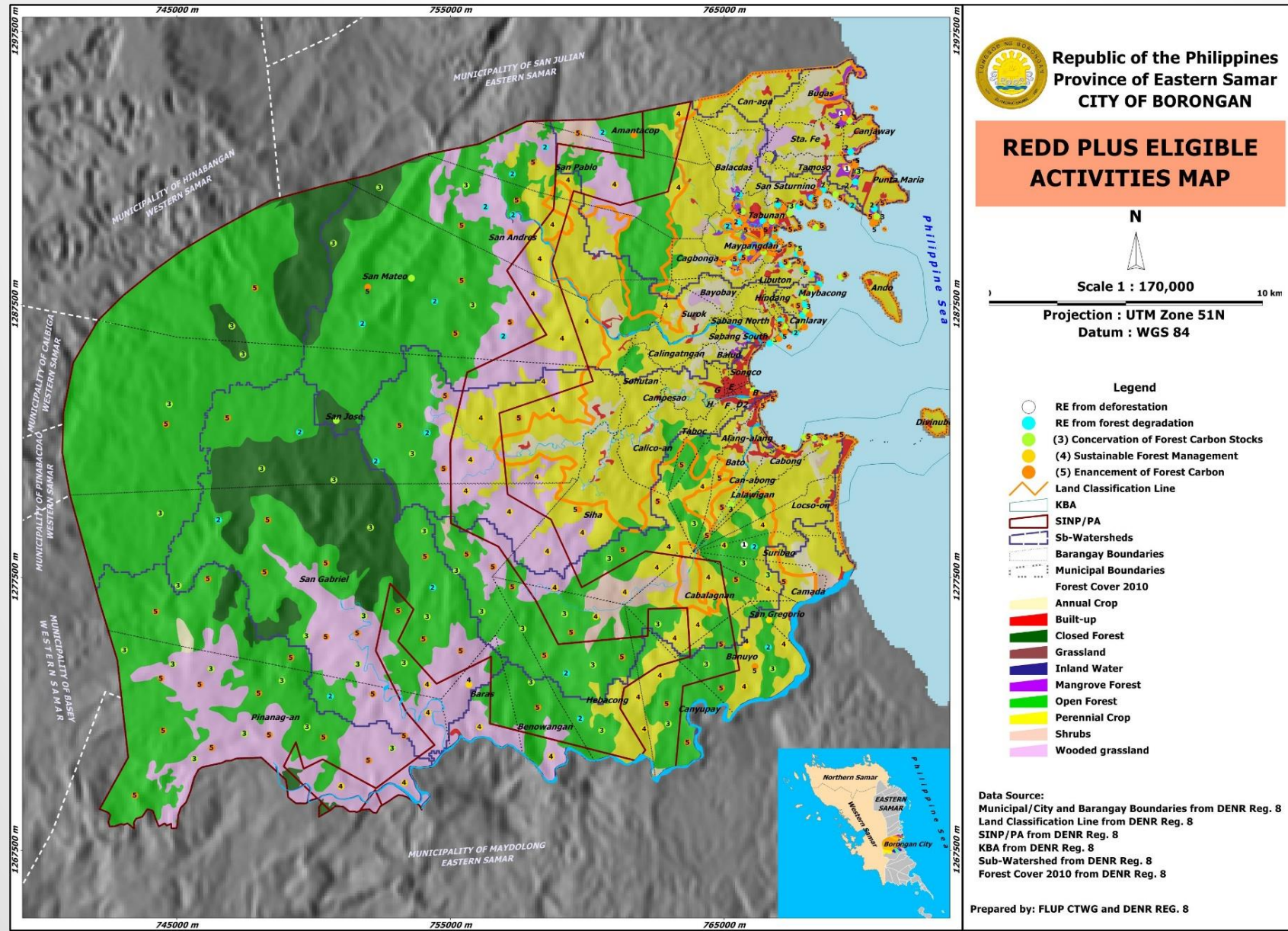
- ✓ Conducted participatory rural appraisal (PRA).
Conducted a series of participatory workshops, focus group discussions with key informants of the municipality and the local community members in the barangay.
- ✓ Generated about 30 maps with unique features which were used to respond to issues, and design actions to be taken such as in formulating the work and financial plan.



PROPOSED ALLOCATION MAP, CITY OF BORONGAN



REDD+ ELIGIBLE ACTIVITIES MAP, CITY OF BORONGAN



IMPLEMENTED REFORESTATION, ANR, & AGROFORESTRY

❑ Financial and Institutional Arrangement (For Reforestation)

Operation	Specifications	Labor	Material subsidy		
		Total PHP	Type	Quantity/ha	Total (PHP/ha)
Brushing	Strips 1m wide every 3 m				
Staking	1,110 stakes/ha				
Pit digging	Pits 30 x 30 x 30 cm				
Seedling hauling	1,110 seedlings/ha				
Planting	containerized seedlings		Various	1,110	8,936
Beating up	20% replanting, incl. hauling, planting		Various	222	
Tending	7 times in 3 yrs spot weeding				
Protection	1 guard/100ha/3yrs				
Total		16,000			9,000

IMPLEMENTED REFORESTATION, ANR, & AGROFORESTRY

❑ Financial and Institutional Arrangement

Subsidy Payment Schedule for Model 1 Rainforest Plantation

		Total PHP/ha	1 st Inst'ment PHP/ha	2 nd Inst'ment PHP/ha	3 rd Inst'ment PHP/ha
Labor cost in PHP (lumpsum per ha, after passing M&E)		16,000	0	8,000 50%	8,000 50%
Material Cost in PHP (against receipts, up to maximum budget per ha)		9,000	9,000 after liquidation	0 0%	0 0%
Total cost		25,000	9,000	8,000	8,000
	GLZ subsidy up to 80%	20,000	9,000	5,500	5,500
	-for material ¹⁾	9,000	9,000	0	0
	-for material ²⁾	11,000	0	5,500	5,500

- 1) Reimbursement of costs for seedlings etc. up to maximum 9,000 PHP/ha including seedlings for beating up in year 2
- 2) Provided full acceptance by M&E, possible reductions in case of lower survival rates, amounts to be passed on in full to farmer beneficiary.

IMPLEMENTED REFORESTATION, ANR, & AGROFORESTRY

❑ Financial and Institutional Arrangement

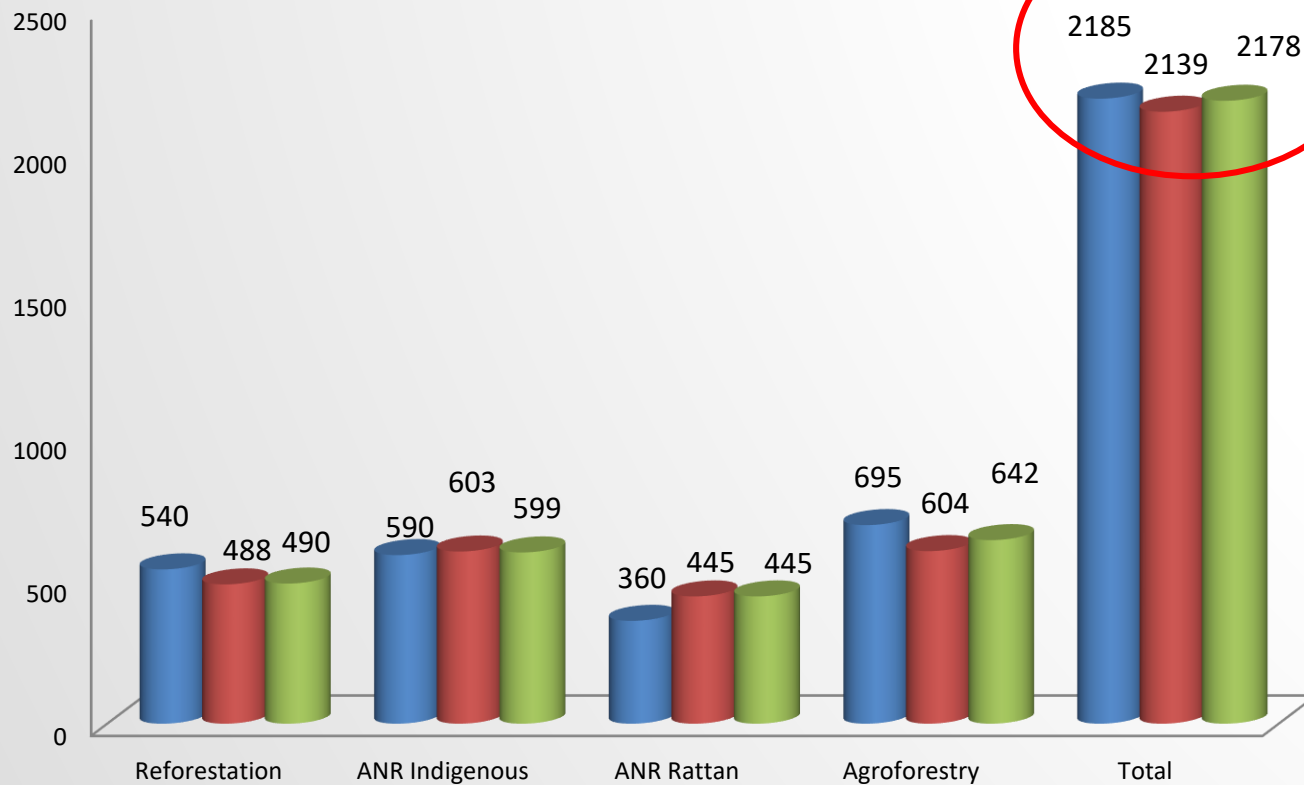
The partner LGU/PO shall receive an advance used as disposition fund amounting to 15% of the overall grant subsidy for NRM. At least 80% of the disposition fund has to be spent and liquidated before requesting replenishment.

Payment Criteria:

1 st installment (material)	<u>Payment for seedlings, on delivery</u> , inspection and acceptance of seedlings by DENR staff or TA consultants, evidence of compartment map and implementation arrangements (sub-agreements with farmers)
2 nd installment (labor subsidy)	<u>Three months after planting, based on M&E check</u> by designated DENR staff, including GPS check of actual area planted, minimum number of 1,000 established plants/ha corresponding to ca. <u>90% survival rate</u> , lower survival rate needs beating up, additional seedlings can be invoiced within the budget limits.
3 rd installment (labor subsidy)	<u>Maintenance and retention, 2 years after planting</u> , after M&E check by designated DENR staff. If a minimum number of 890 established plants/ha corresponding to ca. <u>80% survival rate</u> has been confirmed, the full bonus (retention fee) of 5,500 Php/ha shall be paid. <u>Lower survival rates will cause proportional deductions</u> (e.g. at 750 effective trees $750/890 \times 5,500$ PHP = 4,635 PHP/ha)

IMPLEMENTED REFORESTATION, ANR, & AGROFORESTRY

Overall Physical Accomplishments of REDD+ through FAs in Southern Leyte



Photos taken
on April 2018

97.89%
99.67%



DEPUTATION OF BANTAY-GUBAT/FOREST RANGERS

❑ Good practices in deputizing Bantay-gubat

- ✓ Capacitated and deputized the forest rangers / bantay-gubat for them to be the frontliners in the daily local monitoring of illegal activities in the FFL.
- ✓ Created/established the pro-active participation of the forest rangers particularly for hotpots barangay / areas in the LGUs.
- ✓ Practiced pro-active partnership between City / Municipal ENROs and forest rangers in the enforcement of policy.
- ✓ Strengthened linkage between DENR, City/Municipal ENROs and law enforcers (e.g. local policemen and Philippine army) on environmental law enforcement.
- ✓ Mapped and or recorded the locational hotspot of known illegal activities.



CREATED THE MULTI-STAKEHOLDER FOREST PROTECTION COMMITTEE (MFPC)

❑ Good practices in the creation of MFPC

- ✓ Local chief executive shall spearhead the committee which shall direct the issues in forest protection.
- ✓ Strong partnership of DENR and LGUs in responding to illegal activities in the FFL.
- ✓ Strengthened open discussion addressing illegal activities locally.
- ✓ MFPC complemented the active participation of forest rangers.
- ✓ Enhanced knowledge of stakeholders (e.g. LGUs, POs) in forestry and environmental laws and regulations through feedbacking during meeting sessions.



ESTABLISHED A FUNCTIONAL CITY/MUNICIPAL ENRO

❑ Good practices in the establishment of ENROs

- ✓ Strengthened and capacitated the City/Municipal Environment and Natural Resources Offices (ENROs) in terms of structure and functions.
- ✓ Encouraged the LCE to provided a permanent position of City/Municipal ENROs and support staff.
- ✓ Emphasized to the LCE through constant discussions and mentoring the importance of ENROs as the implementing arm of LGUs in the forestry and environment sector.



FINANCING AGREEMENTS AND LOCAL SUBSIDY CONTRACTS

❑ FINANCIAL AND INSTITUTIONAL ARRANGEMENTS

FINANCING AGREEMENTS

A financing agreement (FA) is a GIZ financing contract granted to local, non-profit implementing partners or organizations to implement the contractually agreed measures and activities of which the recipient assumes full responsibility.

LOCAL SUBSIDY CONTRACTS

Local Subsidy (LS) is a GIZ financing contract which is granted to local, non-profit implementing partners or organizations to implement contractually agreed measures.

- ❑ It contributes to qualifying the recipients in the interests of partner support.
- ❑ It is an instrument to help recipients to **finance the implementation of small project measures**, workshops, and purchase of goods and services.

❑ FINANCIAL AND INSTITUTIONAL ARRANGEMENTS

	Financing Agreement	Local Subsidy
GIZ Office Value of Authority	Up to EUR 100,000	Up to EUR 50,000
Recipient	Partner who has the capacity to handle its own account	Partner who do not have yet the capacity to handle its own account
Responsible in managing funds	Partner/Recipient	GIZ
Technical report	With standard format	Without standard format
Supporting documents to financial report	Original or Certified true copy of supporting documents	Original supporting documents
Bank account	Separate/special bank account setup	No special bank account required



GIZ Project Evaluation Team,
(Conducted Internal Control)

LESSONS LEARNED (CONCLUSION)

- ❑ The major interventions such as FLUP, reforestation, bantay-gubat, MFPC, City/Municipal ENROs are the essential ingredients for successfully achieving forest & landscape restoration.
- ❑ Significance of role of focal persons both from partner DENR and recipient or implementing organizations - this will make or break project implementation
- ❑ Pro-active engagement of the Technical Working Group Members
- ❑ Understanding of government procurement processes and procedures is a must.
- ❑ Matching of internal process and government procurement processes and procedures

RECOMMENDATIONS

- ❑ Project focal persons should be properly selected according to their roles and functions.
- ❑ Abide with current regulations or laws on government procurement processes and procedures.
- ❑ Observe appropriate allocation of period and timing for proposal development, approval, fund transfer, start and end of project.
- ❑ Utilize current and declared boundary, proper documentation of disputes and recommend actions to policy makers.



**THANK YOU VERY MUCH
FOR LISTENING 😊**

Contact details:

FOR. FLORANTE T. SABEJON

Assistant Professor,
Department of Forest Science

Biliran Province State University (BiPSU)
BiPSU – Biliran Campus
BNAC, San Isidro, Biliran, Biliran

Mobile: +63 936 804 0814
Email: fsabejon@yahoo.com

Contact details:

DR. KLAUS SCHMITT

Green Sector Coordinator
former Principal Advisor REDD+ Project

Deutsche Gesellschaft für Internationale
Zusammenarbeit (GIZ) GmbH

10th Floor Bank of Makati Building
Ayala Avenue Extension, 1209 Makati City
Manila, Philippines

† +63 2 6515 113 – f +63 2 753 1441
m +63 998 965 3755
e klaus.schmitt@giz.de – i www.giz.de